

Accessibility Guide for Astley Castle



Astley Castle combines the thrill of modern architecture with the atmosphere of an ancient, moated place. Groundbreaking accommodation sensitively stitched into once-ruinous walls, a radical approach which won the UK's most prestigious architecture award.

The Landmark Trust Shottesbrooke Maidenhead Berkshire SL6 3SW
Patron HM King Charles III *Chairman* Alan Leibowitz *Director* Dr Anna Keay OBE
Charity registered in England & Wales 243312 and Scotland SC039205

Bookings 01628 825925 *Office* 01628 825920 *Facsimile* 08432 906896
www.landmarktrust.org.uk

Contents

Contact us.....	2
Introducing Astley Castle	3
Getting here.....	4
Arrival	9
Getting around inside	12
Getting around outside.....	23
Customer care support	24

Contact us

For all enquiries, including any related to accessibility requirements, please contact our Booking Enquiries team on:

- Email: booking@landmarktrust.org.uk
- Phone: 01628 825925
- Fax: 08432 906896

Introducing Astley Castle

At a glance

Level access

There is level access to the main entrance hall of the Castle. Situated to the right in the entrance hall is the platform lift providing access to the first floor. On the ground floor there is level access to three of the bedrooms and the first floor has level access to the kitchen, dining and living space.

Level access bedrooms

- There is one double bedroom on the ground floor with an accessible en-suite shower room.
- There are also two twin bedrooms.
- Note that the second double bedroom is accessed by three steps down from the main level.

Level access bathrooms

- The ground floor double bedroom has an accessible en-suite shower room.
- There is also a bathroom on the ground floor.

Getting here

Address

Astley Castle

Astley

Nuneaton

Warwickshire

CV10 7QD

what3words:

Ten.coping.riding

Travel by public transport

Train

- The nearest station is Nuneaton (5 miles away by road)
- Routes and times can be viewed at: www.nationalrail.co.uk
- To check each train company's accessibility policy and facilities, visit:
<https://www.nationalrail.co.uk/on-the-train/accessible-train-travel-and-facilities/>

Bus

- No services run within walking distance of the castle, however there is a daily bus from New Arley to Nuneaton. Regular services also run along the main road from Nuneaton to Coventry.

Travel by taxi

- Arrow Taxi: 02476 344444
- MI Taxi Service: 02476 381111
- Star Taxi of Bedworth: 02476 362066

Parking

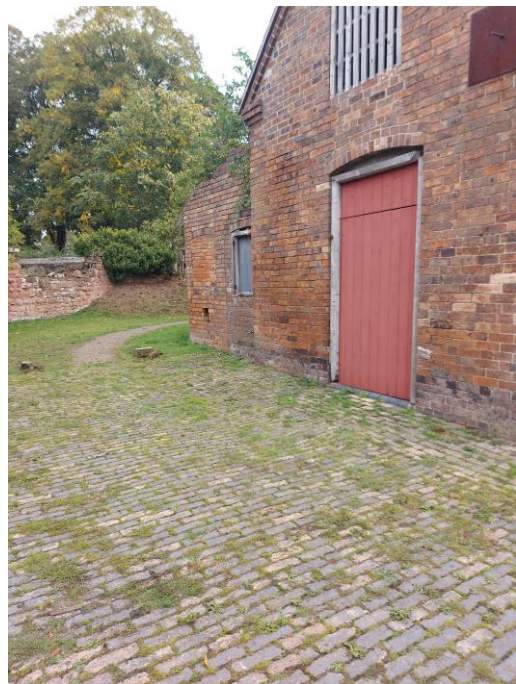
- The designated parking area is in the yard gate width 3,040cm approximately 50 meters from the Castle entrance door, via a gravelled path with an incline.

Upon request

- The main Castle entrance gate 3,060cm wide may be opened to allow vehicle access. The gate code will need to be requested in advance.
- The moat gates, 2,040cm wide, may then be opened to allow vehicle access for drop-off and pick up purposes only. This then allows a vehicle to park within approximately 10 meters of the Castle front door.



Yard entrance



Path from yard towards the Castle



Continuation of the path



The gate at the far end can be opened to allow vehicle access for drop off



Gate that can be opened from Castle Drive upon request



Moat gate which can be opened upon request (normally pedestrian access only)



From the moat gate towards the Castle entrance



View towards the Castle door

Level access

Access to Astley Castle is via a wide 95cm level access door. The keyhole is 100cm from the ground.



Main entrance door into Castle

Arrival

Main entrance hall

- The main entrance hall is spacious with a generous turning area for wheelchair users.
- The hall gives access to the lift, bedrooms, bathroom, shower room and stairs to the main living area.
- Ceiling lights in this area are movement activated.



Hall, looking towards double en-suite bedroom



Stairs to first floor (each tread 18cm deep)



Lift door, on left in entrance hall

Using the lift

The lift is designed primarily for wheelchairs users. Only two people should use the lift at any one time.

Please do not allow anyone to 'play' in or around the lift; this should only be used under strict adult supervision as children's hands could become trapped.

To travel from the ground floor up to the first floor:

- If the lift platform is on the first floor, press the button with the 'down' arrow to bring it down to ground level.
- The lift platform (floor) must be fully returned to the bottom of the lift shaft to enable the door to open and close and allow the lift to be operational (this is a safety feature).
- In the event that the platform has not returned fully to the bottom of the lift shaft, press the button with the 'down' arrow on the lift control panel to the left of the door until the platform is completely returned to its starting point on the ground floor. You will hear a 'CLICK' to indicate that it is in the correct position.
- Open the door to the lift shaft and enter.
- On entering the lift shaft, press the 'up' button on the lift control panel inside, hold this button in until you reach the first floor, then release. You will hear a 'click', open the door immediately to exit the lift.

To travel from the first floor down to the ground floor:

- If the lift platform is on the ground floor, press the button with the 'up' arrow to bring the platform to the first floor.
- Once the lift platform is fully in place, listen for a 'CLICK' and then open the door to the lift and enter.
- Press the 'down' arrow on the lift control panel inside the lift and hold it in until platform has completely returned to its starting point on the ground floor. You will hear a 'CLICK' to indicate that it is in the correct position.

- The lift platform (floor) must be completely returned to the bottom of the lift shaft to enable the door to open and close.
- Open the door from the lift shaft and exit.

Please note that the lift cannot be used in the event of a fire. It is not suitable for large mobility scooters.



Lift door on first floor

Getting around inside

Visual impairment

Throughout, the walls, doorframes and floors have very little colour contrast.

Each bedroom has additional reading lights next to each bed.

Two additional readings lamps are provided.

Accessible rooms

The main living area and kitchen is open plan and accessible via the stairs or lift.



Main living area



Stairs leading from main entrance hall

Accessible bedrooms

The castle has four bedrooms, three with flat access and one via three steps (13cm depth each).

Bedroom 1 (Twin)

This bedroom has level access from the main ground floor entrance hall.

- The bedroom door is 90cm wide.
- There are two single beds. The width to the left-hand side of one bed is 160cm; the width to the right-hand side of the second bed is 140cm. The gap between the beds is 70cm.
- The height of both beds is 66cm including the mattress.
- There is a chest of drawers, hangers for clothes at 170cm and a towel rail. Two chairs, 46cm.
- There is ceiling lighting, controlled by a switch inside the doorway, at 90cm high on the right. There are additional lamps on each table by both beds.
- An external door, 70cm wide, from this bedroom leads to a grassed, level access area outside.



Bedroom 1

Bedroom 2 (Twin)

This bedroom has level access from the main ground floor entrance hall.

- The bedroom door is 90cm wide.
- There are two single beds. The width to the left-hand side of one bed is 60cm the width to the right-hand side of the second bed is 190cm. The gap between the beds is 50cm.
- The height of both beds is 66cm including the mattress.
- There is a tall chest of drawers, hangers for clothes at 160cm and a towel rail. Chairs 46cm.
- There is ceiling lighting, controlled by a switch inside the doorway at 90cm on the left. There are lamps on the tables by both beds.
- An external door, 70cm wide, from this bedroom leads to a grassed, level access area outside.



Bedroom 2

Bedroom 3 (Double)

This bedroom is accessed from the main ground floor hall but via three steps each of 13cm in depth, no handrail.

- The bedroom door is 90 cm wide.
- There is a double bed. The height of the bed includes the mattress 60cm. The width to the right-hand side is 130cm and to the left 110cm.
- There is a chest of drawers, hangers for clothes at 160cm, a towel rail and two chairs 46cm high.
- There is ceiling lighting, controlled by a switch inside the doorway at 90cm on the left. There are lamps on the tables by both beds.
- An external door, 70cm wide leading to steep steps to a small, paved area.



Steps leading to Bedroom 3



Bedroom 3



Bedroom 3

Bedroom 4 (assessable Double with en-suite shower-room)

This bedroom has level access from the main ground floor entrance hall.

- The bedroom door is 88cm wide.
- There is a double bed. The width to the left-hand side of the bed is 88cm. The width to the right-hand side of the other bed is 300cm.
- The height of the bed is 64cm including the mattress.
- There is a wardrobe with hangers for clothes at a height of 160cm and a towel rail, chair with arms (height of the seat is 52cm including the cushion pad).
- There is ceiling lighting, controlled by a switch inside the doorway at 90cm on the right. There are lamps on each table by both beds.
- A foot stool, 40cm high.
- An external door, 70cm wide leading to steep steps to a small, paved area.



Bedroom 4

Accessible bathrooms

The castle has three bathrooms: a main bathroom, a shower-room and an ensuite shower-room off double bedroom 4 accessed down three steps.

Bathroom

The main bathroom has level access from the main hall.

- The doorway is 90cm wide.
- The light switch is outside the door on the right, height 90cm.
- Toilet height is 43cm (no handrails).
- The basin height is 85cm. The taps are lever operated.
- The bath is 73cm x120cm. The taps are level operated.
- A towel rail and small chair 43cm high are provided.



Bathroom

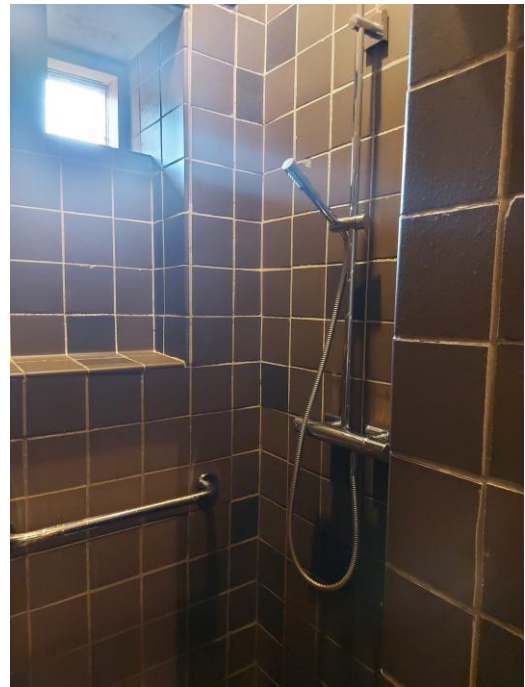
Shower-room

The shower-room has level access from the main hall.

- The doorway is 90cm.
- The light switch is outside the door on the left, height 90cm.
- The toilet height is 43cm (no handrails).
- The basin height is 83cm. The taps are lever operated.
- The shower has a small step of 2cm leading into it. The floor within the shower is non-slip. The shower is wall mounted with controls at 125cm high. The shower is lever operated either as an overhead shower or from a handheld attachment. There is a handrail 102cm.



Shower room



Shower area

Ensuite shower-room

- The door width is 90cm.
- The light switch is 90cm outside the doorway on the right.
- The toilet has a seat height of 49cm with a retractable rail to the right, height 70cm. The width to the wall on the left-hand side is 26cm.
- The height of the basin is 83cm with space underneath and handrails on both sides. Tapes are lever operated.
- The shower area has a non-slip surface, and a stand-alone chair is provided, seat height is 46cm. The shower is wall mounted with controls at a height of 92cm. The shower head can be removed from its bracket.
- There is a handrail on the wall height of 103cm.
- The room is 210cm x 300cm.



Ensuite toilet



Ensuite wash hand basin



Ensuite shower area

Kitchen and dining space

This area is on the first floor accessed by stairs or the platform lift.

Kitchen facilities

- The self-catering kitchen includes worktops with a height of 92cm.
- The oven is a Range Master (three ovens, side opening doors and 5 hobs) located in the centre of the work area. Cupboards with spring-fitted hinges to either side contain crockery, glassware and cooking equipment.
- The microwave is located on this worktop together with the kettle. Sockets are above the worktop, height 125cm.
- The island unit with a height of 92cm contains the sink with lever operated taps, dishwasher, and fridges. The cutlery drawer is also located within this island unit.



Kitchen area

Dining facilities

- The large dining room table has a height of 80cm with space underneath to a height of 62cm.
- The dining table is presented with 8 chairs, all without arms. Each chair is 46cm high.



Dining room area

📍 Upper floor living area

The first floor living area is open plan with low sofas and three low chairs all with the height of 40cm.



Living area



A high-backed chair with arms is available, height to the seat pad is 50cm.

Getting around outside

- Within the moated area of the Castle the majority of the area is lawn, with a graveled Knot Garden.
- The paths, where lain are fine gravel.
- Within the ruins the paving is unlevel in places.
- Access to the outside dining table is via this unlevel paving.



Outside dining area to right of entrance door



Outside area to left of entrance door

Customer care support

Accessibility equipment

All accessibility equipment available is already listed in this document.

Door handles

Please note the door handles at this property are bespoke and do not comply with current regulations.



External door handles

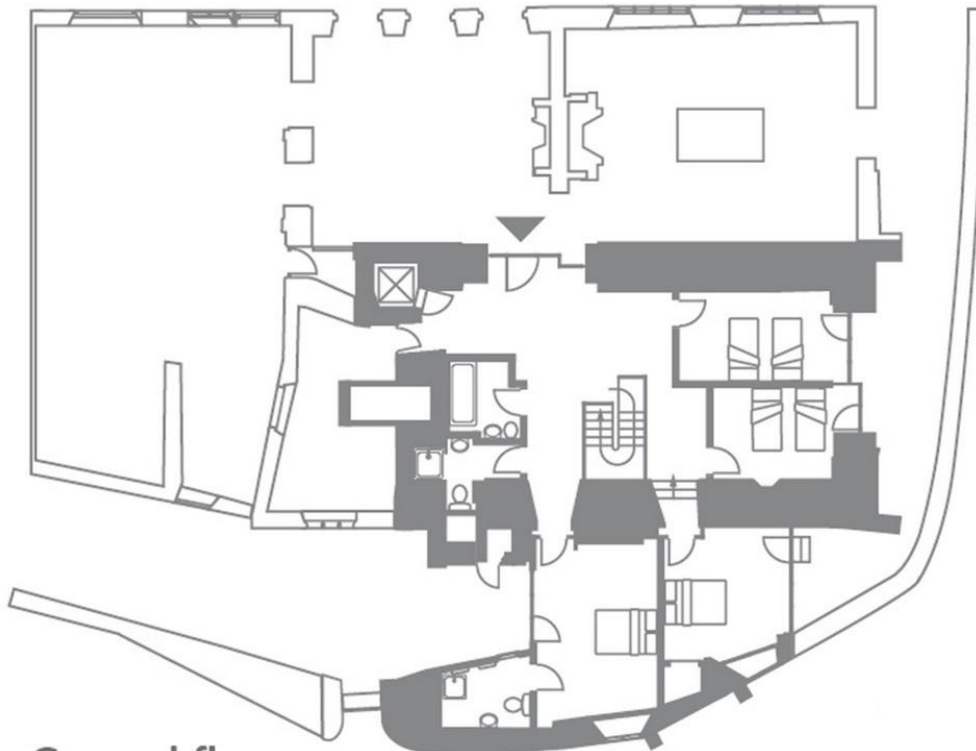


Internal door handles

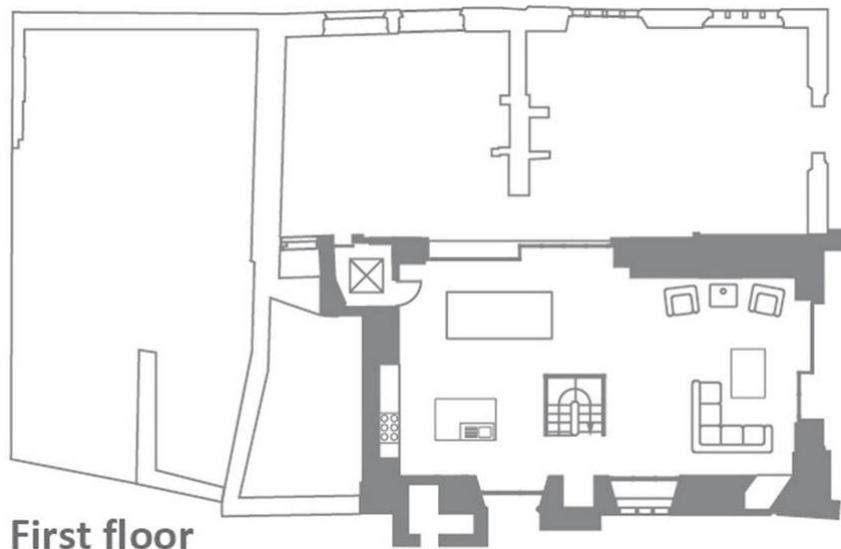
Emergency evacuation procedures

- Smoke and CO2 alarms, are located throughout the building.
- The platform lift should not be operated in event of fire.
- An evacuation chair is located within the alcove behind the bookcase.

Internal floor plan



Ground floor



First floor