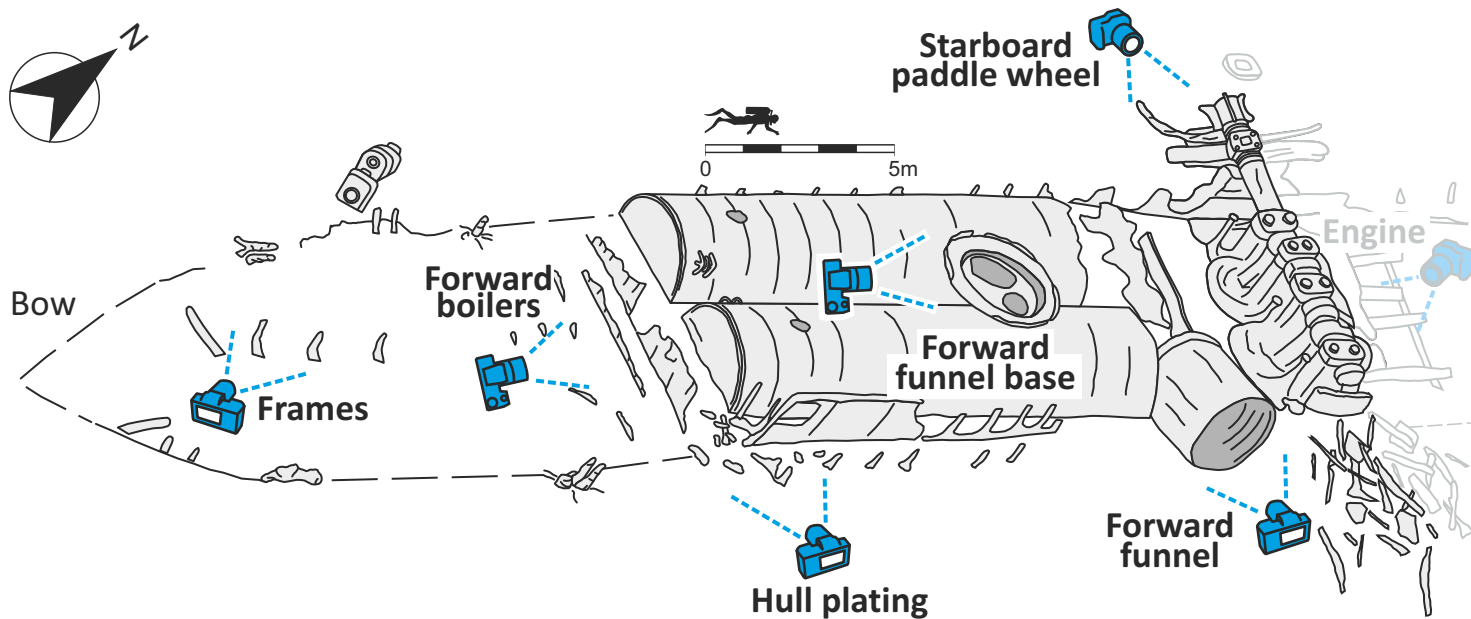
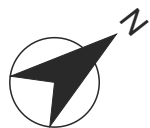


IONA II DIVE TRAIL

Monitoring Guide

ENGLISH HERITAGE

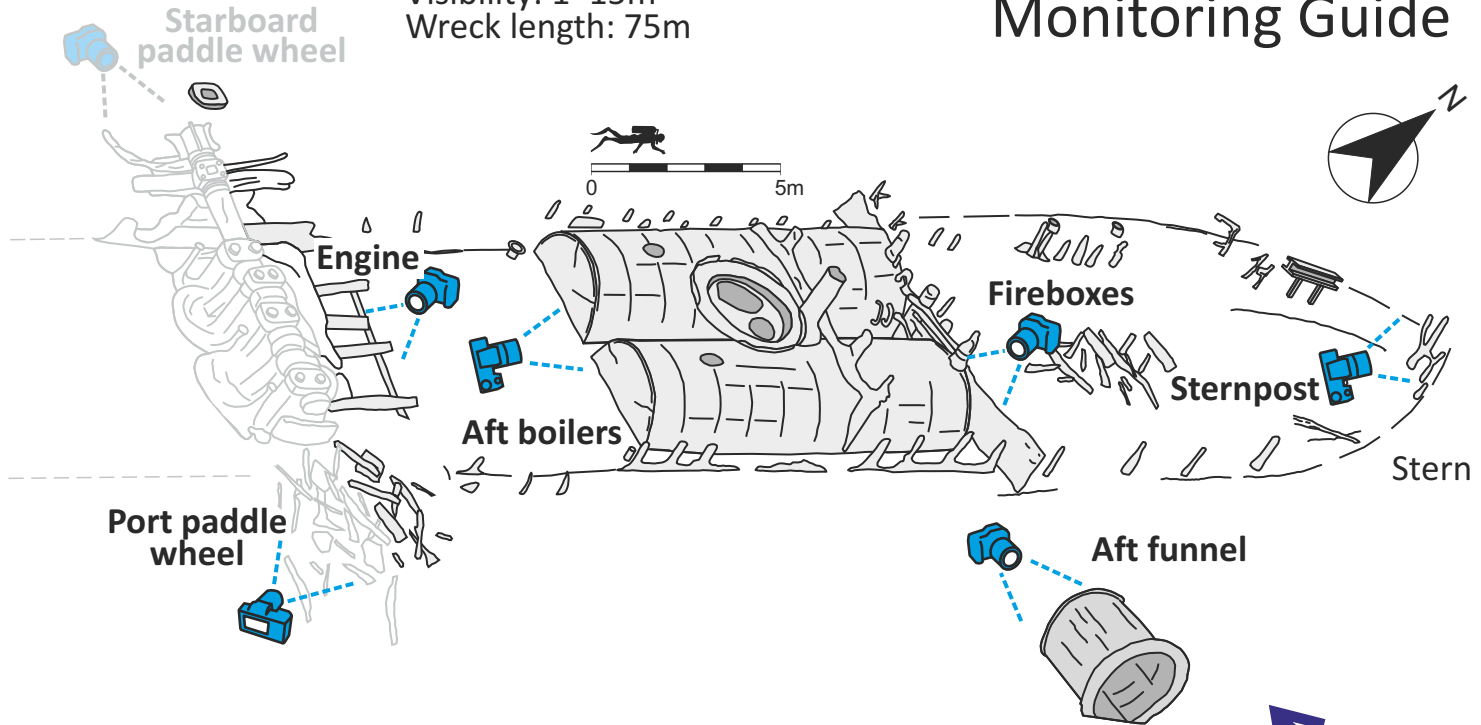


This iron paddle steamer is under constant threat of deterioration through environmental factors and human interference. Wreck monitoring minimises this risk. More information is in the **Wreck Investigations Booklet** and Dive Trail website.

Slack: ± 2 h LW
Depth: 22–28m
Visibility: 1–15m
Wreck length: 75m

IONA II DIVE TRAIL

Monitoring Guide



You can use the bars as a photoscale:
One bar unit = 1cm

Head 245 degrees or WSW from
the *Robert's* rudder and swim 35m to *Iona II*

Notes and Comments



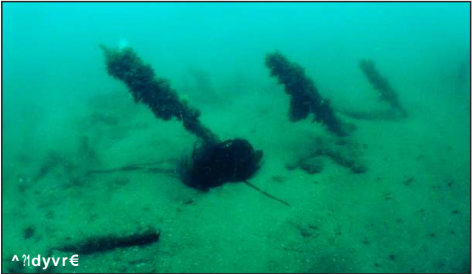
Forward funnel base



Starboard paddle wheel



Forward boilers



Frames



Hull plating



Forward funnel

Notes and Comments



Firebox



Sternpost



Engine



Port paddle wheel



Aft boilers



Aft funnel