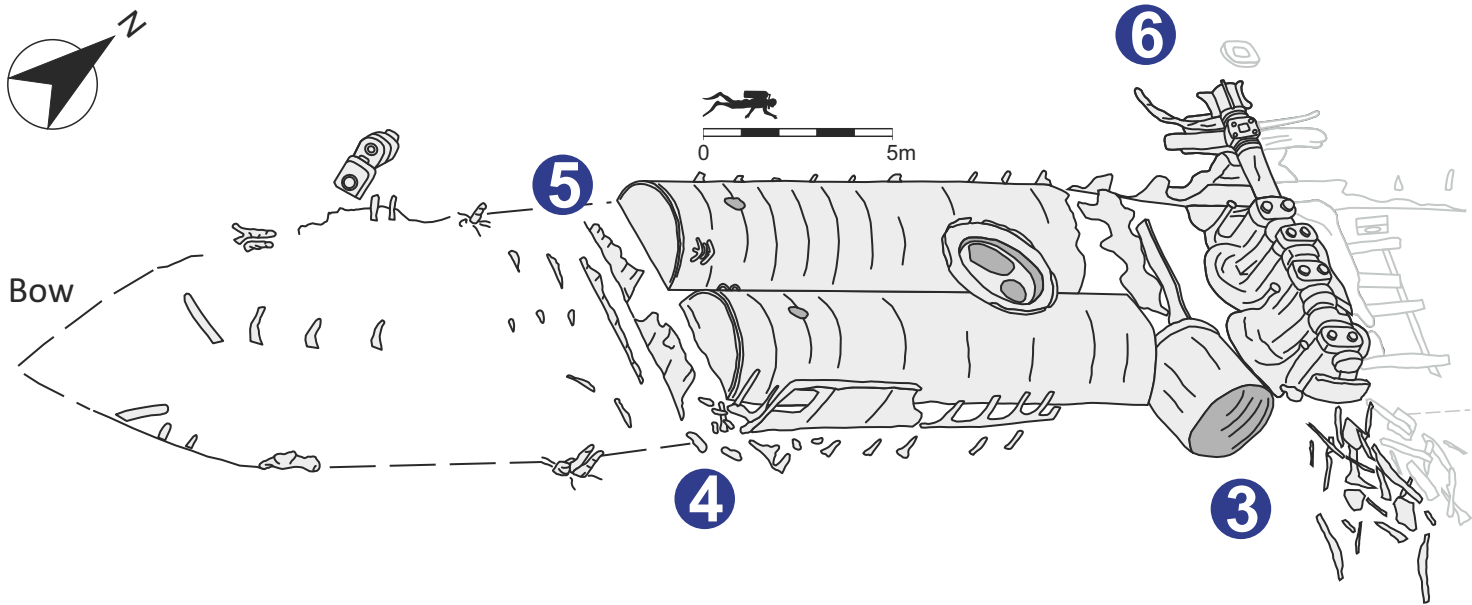
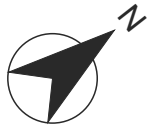


IONA II DIVE TRAIL

Introductory Guide

ENGLISH HERITAGE

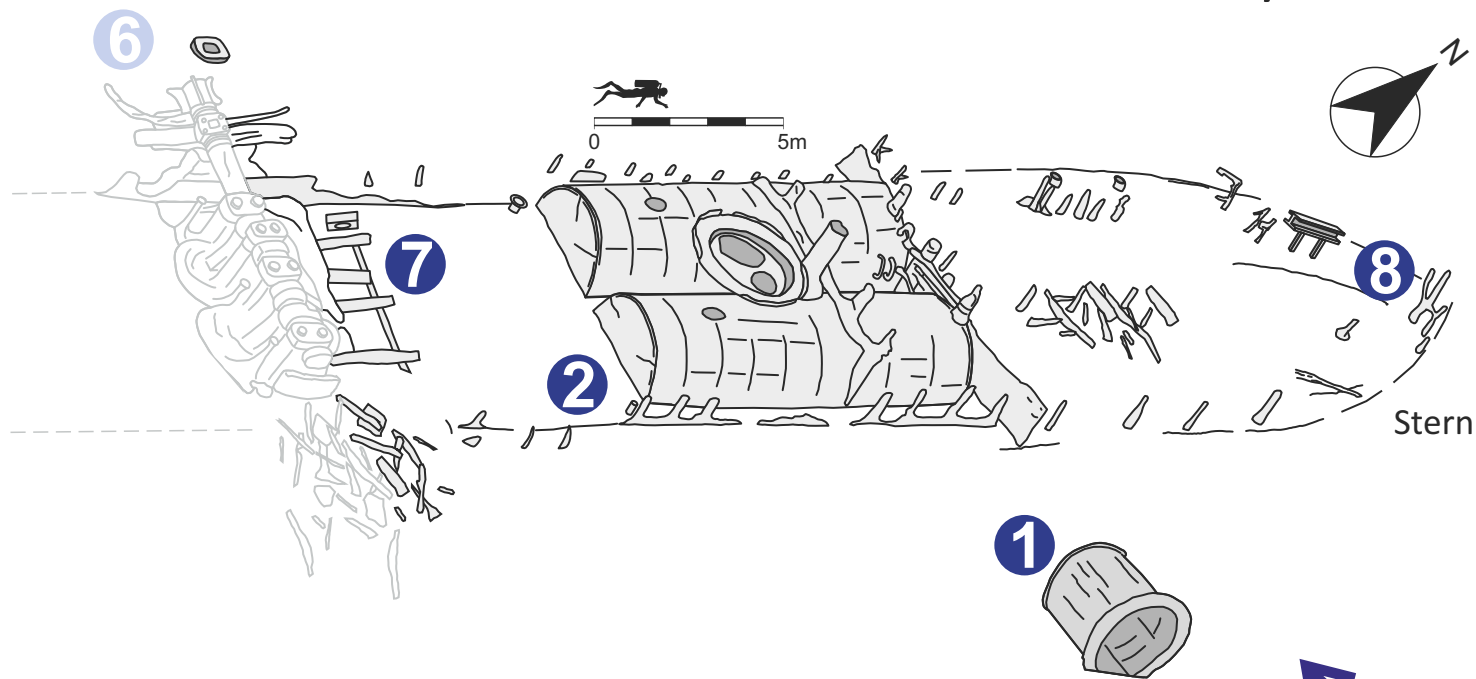


Built in 1863 as a passenger ferry, it sank *en route* to running the blockade of Confederate ports. The wreck was rediscovered in 1976, and declared protected in 1989. More information is in the **Introductory Booklet** and Dive Trail website.

Slack: ± 2 h LW
Depth: 22–28m
Visibility: 1–15m
Wreck length: 75m

IONA II DIVE TRAIL

Introductory Guide



You can use the bars as a photoscale:
One bar unit = 1cm

Head 245 degrees or WSW from
the *Robert's* rudder and swim 35m to *Iona II*



J. Wright

5 Larger forward boilers



R. Holden

6 Remains of paddle wheel



M. Shean

4 Hull plating remains



M. Deaton

3 Forward funnel



7 Oscillating engine



8 Stern post



2 Smaller aft boilers



1 Aft funnel