



DIVE LUNDY

Thank you for your enquiry about diving around Lundy. This information sheet should tell you all you need to know about diving on Lundy and planning your holiday.

Please note that the maximum speed limit for all vessels operating within 100m of the island is 5 knots.

WHY DIVE LUNDY?

The simple answer is because the marine environment around Lundy is spectacular and it provides divers with unique experiences that they will treasure. Lundy was established as a voluntary Marine Nature Reserve in 1971, this was followed with the first Marine Nature Reserve designation in 1986. Since then, the island's importance has been recognized through further designations as a Special Area of Conservation in 2000 and was nominated as the first Marine Conservation Zone (MCZ) in 2010. Along with these designations an area to the east of the island has been declared as a No Take Zone since 2003¹, this means that no fishing or collection of sea life of any kind can take place in this area. We ask that you respect this and report any activities to the Warden.

The high level of protection at Lundy has ensured that our marine life is amazing and, along with spectacular scenery, will allow you to experience some of the most varied diving in the U.K. Many divers return to Lundy again and again to dive in the unique waters littered with wrecks and diverse marine life including our playful resident seals and beautiful anemones and corals.

Lundy's waters are home to two protected wrecks; the *Iona II* and the Gull Rock Wreck. Both wrecks are protected by the Protection of Wrecks Act 1973 due to their significance and therefore cannot be dived without a licence. A new dive trail for the *Iona II* has been produced and received an award in September 2015. Further details on the trail and the history of the *Iona II* can be found through the Diving pages at www.lundyisland.co.uk

DIVING AROUND LUNDY

Lundy's location, on the edge of the Atlantic, means that we enjoy unpolluted water which can have excellent visibility, particularly in the calm summer months. However, the position of the island means it can be subjected to very strong tidal currents so it is essential that you understand the tidal streams at each site. It is advisable to use one of the experienced dive charter boats as their skippers have excellent knowledge of the dive sites making the whole experience safer and more enjoyable. Shore diving is limited to only a couple of safe entry points from the shore.

The Lundy Warden oversees the management of the Marine Conservation Zone, No Take Zone and Special Area of Conservation including the day-to-day running of the dive facilities and is happy to advise you on any aspect of diving on Lundy. Please feel free to contact the Warden before your visit on warden@lundyisland.co.uk or come and say hello during your visit.

We encourage safe diving practices therefore each group should nominate a diving officer who is responsible for organizing and supervising the group's diving activities. The diving officer is also responsible for raising awareness of the group as regards the legal protection of Lundy's marine protected area and should ensure that all divers abide by the Code of Conduct²

Shellfish: Please be aware that the regulations surrounding diver-caught shellfish have changed and all those wishing to take shellfish (scallops, crabs or lobster) must apply for a license from the Devon and Severn IFCA. Please see their website for details and for an application form www.devonandsevernifca.gov.uk.

However, many local charters operate a no take policy and their capture is not encouraged.

In December 2013, a new byelaw was passed stating that no crawfish (spiny lobster) can be taken by anyone from the Marine Conservation Zone at Lundy. To assess the state of the crawfish population at Lundy we are running a survey in which you can participate. Local charter skippers have copies of the survey sheets and further sheets are available from the Warden warden@lundyisland.co.uk.

“Take only photos, leave only bubbles”

Please be advised: Lundy is subject to fierce tidal races and sudden changes in weather which make it no place for inexperienced divers. The use of permanent surface marker buoys is strongly recommended. Persons diving off Lundy do so at their own risk and are responsible for their own safety. The Landmark Trust and the Lundy Company accepts no responsibility or liability for injuries or accidents which occur when diving in the waters around Lundy.

IONA II DIVE TRAIL

The Iona Dive Trail was opened in 2014. The *Iona II* is a paddle steamer which foundered off the east coast of Lundy after setting sail to assist in the American Civil War. There are four elements to the trail for you to immerse yourself in and assist in the monitoring of this protected wreck.

Please be aware that as the *Iona II* is legally protected you are required to have a licence in order to dive her. All the details are available through the Diving pages on our website www.lundyisland.co.uk

DIVE FACILITIES ON LUNDY ISLAND

Please book facilities a minimum of one month prior to your visit to ensure that we are able to meet your needs and to receive your 10% discount on airfills. Please note that last minute

requests may not be possible therefore please always book in advance to avoid disappointment.

The Beach Building has been built with divers in mind and offers:

- Basic lockable storage/changing areas for two dive parties (approx. six persons per party) free of charge. Please note that these must be booked in advance and are subject to availability.
- Dunk tank for washing kit. Please note that during dry spells, the water may not be refreshed as frequently due to water restrictions and that the indoor tap is not for washing kit.
- Air-fills the triple filter compressor can supply air up to 230bar and tanks will be filled for you by island staff, book airfills in advance to receive a 10% discount. Please ensure that tanks are in test with a visible test stamp (those without a visible in-date test stamp cannot be filled).

Twin-sets are made up of two separate tanks and will be charged as such.

The group leader must settle the account the day before departure.

Prices for fills are:	Up to 3 litres	£3
	4 litres – 15 litres	£7
	16 litres +	£9



Beach Building

ACCOMMODATION

Many divers come to Lundy for a weekend but for many this is not nearly enough to experience everything that Lundy has to offer. Staying on the island maximizes the time you spend diving and minimizes travel time. The range of accommodation includes self-catering properties and camping facilities. The Barn is our largest self-catering property and has space for up to fourteen people in two dormitory style rooms. It is advisable to book well in advance as island accommodation and facilities are limited. The full range of accommodation can be booked through our website www.lundyisland.co.uk or via the Lundy Shore Office 01271 863 636. Please note that the Warden cannot process accommodation bookings.

THE LUNDY GENERAL STORE

The Lundy Store carries an extensive range of fresh, frozen and canned food, along with toiletries, household goods and souvenirs. A range of wines, beers and spirits are available from the store and Marisco Tavern. There is a good supply of fresh produce which is replenished on sailing days. If you choose to bring your own groceries with you please ensure that they are in a sealed plastic container as open bags represent a hazard and must remain onboard your vessel.

Many divers find that on the first day they arrive outside of store opening hours due to their diving schedule. You can, however, make an advanced order which will be delivered to your property on the day, Advance Order forms must be received **at least two weeks** before your visit. For further information please look at the store's pages on our website shop@lundyisland.co.uk or contact the store on 01237 431 831.

The store also stocks t-shirts/hoodies/hats etc. and souvenirs. Opening hours are displayed in the store window and on the Tavern notice board. If you enjoy eating outdoors there is a large gas BBQ available for hire (disposable BBQs are available to buy) and the store has an excellent range of BBQ foods.

If you prefer someone else cooking for you the Marisco Tavern provides a variety of delicious meals.

MARISCO TAVERN

The Marisco Tavern is the focal point of island life for everyone on the island. Breakfast, lunch and dinner are served every day; please refer to the board in the Tavern for serving times and menus.

Packed lunches are available on request; please place your order with the Tavern staff the day before to ensure the kitchen has enough notice.

A variety of alcoholic and non-alcoholic beverages are available along with tea, coffee and soft drinks.

GETTING TO LUNDY

Since 2006, Lundy has been rat-free for the benefit of the seabird populations. To ensure that we maintain our rat-free status, it is important that visitors to the island take extra precautions to reduce the risk of reintroduction. If you are bringing your own boat, please check it for rodents immediately prior to your visit and keep any food sealed or in sealed containers.

You can get to the island either on one of the charter boats, on your own boat ¹ or on our passenger and supply ship the MS Oldenburg.

Fares and sailing times for the Oldenburg can be found on our website. The ticket price is inclusive of the Lundy landing fee (£7 or free to National Trust members) and luggage transport fee (£10 minimum).

There is a luggage allowance of 20kg per person on the Oldenburg and anyone carrying luggage in excess of this will be charged accordingly. A charge of £25 is payable for carriage of personal diving equipment such as tanks, weights etc. and is not considered as excess luggage.

If you would like to use your own RIB or inflatable whilst you are here, this can be transported on the Oldenburg at the cost of £150 per boat and must be booked via the Shore Office on (01271) 863 636. Please note that we are not responsible for any damage or loss caused to boats or equipment during shipment or whilst on Lundy so please ensure your belongings are appropriately insured.

If you come to Lundy using one of the charter boat services please note that there is a luggage transfer service available at a cost of £3 per person (minimum £10), all luggage must weigh no more than 20kg (excess will be charged for) and all food must arrive in sealed plastic containers.

If you do decide to dive from your own vessel please be aware that conditions around Lundy can change very quickly and make sure that you carry all the appropriate safety equipment including a VHF radio or other means of communication.

Petrol is not available on Lundy. If you are bringing your own boat you must organize to bring sufficient fuel for your stay. If you are using the Oldenburg to transport your boat you need to

advise us of any hazardous materials on board your boat, such as petrol etc. Diesel may be ordered in advance on the Dive Facilities Booking Form.

Please remember Lundy is a Marine Protected Area and you must exercise extreme caution when storing fuel and re-fueling your boat.

There is one visitor mooring in the Landing Bay therefore please consult a member of Island staff on arrival to establish if it is available. Please note that mooring is undertaken at your own risk. The Landing Bay provides a sheltered anchorage when the winds are from the western quarter, but is vulnerable to winds from the East or North East. During adverse conditions inflatables can be hauled out of the water but this is not practical for RIBs there please consult a reliable forecast prior to your arrival.

¹Sometimes bad weather prevents small boats like the charter boats or RIBs from getting to the island, so please make sure you arrange your own travel insurance as we do not provide insurance to refund the cost of your accommodation should you have to cancel your trip.

BOOKING CHECKLIST

- Book your accommodation on the island by either contacting the Lundy Shore Office (01271) 863 636 or by visiting our website, www.lundyisland.co.uk
- Book a charter boat. There are a number of independent⁴ charter boats that operate around Lundy

Easy Divers: Simon and Cath Barker. Lundy Dive trips, Island Pick Ups.

<https://www.easydiversnorthdevon.co.uk>. Email: info@easydiversnorthdevon.co.uk. Phone: 07833 020424.

Ilfracombe charters: Obsession II and Silver Spirit, (max. 12 divers each) Andrew Bengey on 01271 866 032 or 07971 462024 or alternatively visit Andrew's website www.lundydiving.co.uk/

Appledore charters: Lundy Castaway (max. 10 divers) – John Fanthorpe on 01598 740 198 or 07970 474273 or alternatively visit John's website www.boattripstolundy.co.uk/

Jay Jay, (max. 10 divers) – contact 01271 863 398 or 07827 679189 or alternatively visit their website www.bristolchannelcharters.co.uk/

Complete a Dive Booking Form and email it directly to general@lundyisland.co.uk with a completed Advance Order form for the store if required.

² Please note that as these are independent operators; neither The Lundy Company nor The Landmark Trust can accept responsibility on their behalf.



Dive Trips to Lundy with Easy Divers

North Devon's Only PADI Training Facility

For a bucket-list wildlife adventure, jump on-board a seal encounter dive trip to Lundy Island off the North Devon coast. Shallow and sheltered dive sites are suitable for novice and experienced divers. We offer full equipment hire if required and if you book more than one trip this season, equipment is free of charge on your second trip!

Our Lundy boat dive trips are perfect for a close encounter with the Grey Seals and the chance to spot Dolphins and Porpoise on the journey to and from. You may even see Sunfish and Basking Sharks during the summer months. We are the only operator to offer dive guides for your peace of mind and safety in the water, plus the option of full or partial equipment hire if required.

Our Skippers are Lundy experts and know the best places to dive with the Seals and the seal sites are shallow (max depth 8-9m) and sheltered so suitable for all experience levels. If you are a diver and this isn't on your bucket-list, it should be!

For more information on our Lundy Dive Trips, please visit our website
<https://www.easydiversnorthdevon.co.uk>

Or alternatively, contact us via email info@easydiversnorthdevon.co.uk or by phone 07833 020424.



Try Dive Lundy Seal Trips



Qualified Diver Trips



Lundy Island Pickups



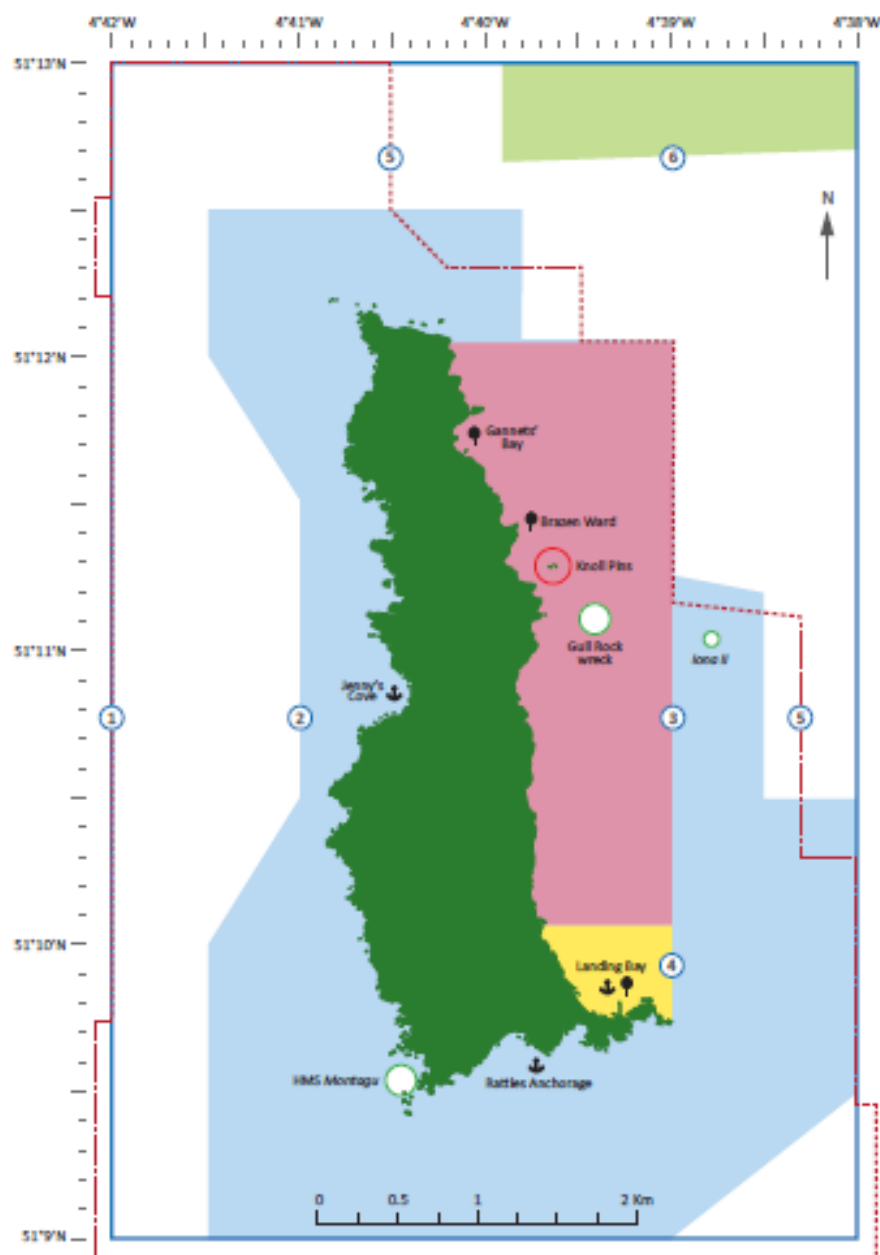
Corporate Team Building

FOLLOW US ON FACEBOOK



Lundy Marine Protected Area Zoning Scheme

The Lundy Marine Protected Area (MPA) was established as a Marine Nature Reserve in 1986 to protect the remarkable diversity of marine habitats and wildlife which are present around the island. The MPA is currently used by a variety of people undertaking various diverse activities. This Zoning Scheme has been developed to enable everyone to enjoy the MPA whilst also protecting this special place.



The Lundy Marine Protected Area encompasses several separate designations, each of which is associated with different specific protections. Originally established as a Marine Nature Reserve in 1986 (under the Wildlife and Countryside Act 1981), the exact same MNR area became a Marine Conservation Zone in 2010 (under the Marine and Coastal Access Act 2009). In 2003, the No Take Zone was established under a Devon Sea Fisheries Committee (now the Devon and Severn Inshore Fisheries and Conservation Authority) byelaw. In 2005, the Marine Nature Reserve became a Special Area of Conservation under the European Habitats Directive (1992); and, in 2016, the whole MPA was included within the much larger Bristol Channel Approaches SAC - specifically designed to protect the harbour porpoise *Phocoena phocoena*. The foreshore around the island (to low water mark) is included with a Site of Special Scientific Interest designation (which includes much of the island) made in 1976.

Within the MPA, special protection is given to the following habitats: intertidal and subtidal reefs; shallow sediment seabeds; and submerged or partially submerged sea caves. The following species are also afforded special protection: short-beaked common dolphin *Delphinus delphis*; bottlenose dolphin *Tursiops truncatus*; Risso's dolphin *Grampus griseus*; harbour porpoise *Phocoena phocoena*; minke whale *Balaenoptera acutorostrata*; long-finned pilot whale *Globicephala melas*; grey seal *Halichoerus grypus*; basking shark *Cetorhinus maximus*; pink sea fan *Eunicella verrucosa*; and spiny lobster *Palinurus elephas*.

Spearfishing is prohibited by byelaw throughout the SAC and MCZ.

This Zoning Scheme is accompanied by a Code of Conduct, much of which is underpinned by law, to which all users of the MPA should adhere.

¹ Features and species protected within the SAC and the MCZ are described above.

² The No Netting area is designated under D&SFCFA Netting Permit Byelaw (Annex 4).

³ The No Take Zone was established to protect sensitive and slow-growing reef communities and to enhance our understanding of the effects of these zones and their role in wildlife management. All extractive activities are prohibited from within the No Take Zone (unless under the auspices of a scientific licence).

⁴ This area, centred on the Landing Bay, is recognised as being an area where swimming, snorkelling and other water sports are likely to be taking place. Boat traffic should be aware.

⁵ The exclusion area for demersal trawls is designated under D&SFCFA Mobile Fishing Permit Byelaw (Annex 1a).

⁶ The inclusion of the scallop gear area is designated under D&SFCFA Mobile Fishing Permit Byelaw (Annex 1b).

⁷ A No Anchoring/No Shot Lines zone extends for 300m around the Knoll Pins in order to protect the delicate marine life associated with these rock pinnacles.

⁸ Lundy has three heritage wrecks. The Lundy II and the Gull Rock wreck site were designated as Protected Wrecks in 1989. HMS Montagu was designated a Scheduled Monument in 2019. A licence is required to dive on a Protected Wreck, but not on a Scheduled Monument.

- | | | | | |
|--|--------------------------------|---|--------------------------------|-------------------|
| Special Area of Conservation (SAC) and Marine Conservation Zone (MCZ) ¹ | No Take Zone ³ | Area closed to demersal trawls ⁵ | No Anchoring Zone ⁷ | Anchorage |
| Refuge Zone (No Netting area) ² | Recreational Zone ⁴ | Area open to scallop gear ⁶ | Heritage wrecks ⁸ | Visitors' mooring |

Not to be used for navigation. Contains OS data © Crown copyright.

Lundy's Marine Code of Conduct

The rules set by the Lundy Marine Protected Area (MPA) Zoning Scheme and No Take Zone applies to everyone. These are strictly enforced and much of the code of conduct is underpinned by law. This code is for everyone who visits Lundy to ensure that the islands marine life and habitats are protected for future generations.

Respect, Protect, Enjoy!

General – Applies to all visitors

- Do not disturb or remove any plant or animal within the Marine Protected Area (Marine Conservation Zone, Special Area of Conservation and Special Site of Scientific Interest).
- All extractive activities are prohibited from within No Take Zone (unless under auspices of a scientific license).
- Lundy is now a rat and mouse free island. To keep it that way please take **ALL** rubbish home with you – especially perishables and check your boats and bags for rodents before arriving.
- Keep a distance of at least 100m from any hauled out seals and/or nesting seabirds – this includes visitors enjoying wildlife on the island from the shore, as well as all vessels in the MPA (including Kayaks and Stand-up Paddleboards).
- Report all interesting or unusual sightings of marine wildlife or any archaeological finds to the Warden.

Boating (all kinds - Kayaks to charter boats - includes Stand-up Paddleboards)

- Keep to a distance of 100 m from nesting seabird sites from 1st March to 1st August. Reduce speed to less than 5 knots when 100m from seabird cliffs and rafting birds.
- Keep to a distance of 100m from hauled out seals (all year round). Reduce speed to less than 5 knots when 100m from seal haul out areas (Particularly at Brazen Ward, Three-quarter wall Bay and Surf Point).
- Reduce speed to less than 5kts when 100m from basking sharks, seals, cetaceans (whales, dolphins and porpoises). Do not change your course to directly approach them, let them come to you.
- Avoid anchoring; if it is necessary then anchor in less sensitive habitats such as sandy sea beds in the Landing Bay.
- Do not anchor or use shot lines within 100m of Knoll Pins.
- Use a WiSe accredited operator when chartering www.wisescheme.org.
- Use the visitor moorings buoys as shown on the zoning scheme in Gannets, Brazen Ward Jenny's Cove and the Landing Bay.
- Do not deploy any mooring. A license is required for permanent moorings and permission for a temporary mooring from the warden.
- The speed limit in the Landing bay is 5 knots.

Diving and snorkelling

- Control buoyancy to avoid contact with marine life be aware of the environment around you especially when taking photographs.
- Try not to leave air bubbles in caves or overhangs.
- **Do not** remove crawfish (spiny lobsters) from the reserve.
- Spear fishing is **not** permitted anywhere within the Marine Protected Area.
- Do not remove any items off any wrecks or any associated material on the seabed.
- Gull Rock Wreck & Iona II are designated wreck sites, diving these without a license is illegal.
- We do **NOT** encourage the taking of shellfish outside of the No Take Zone (NTZ).
- Follow the Seal code of conduct (below).

Rockpooling

- Please try to leave everything as you find it, always return rocks and seaweed as they were, these provide shelter, food and homes for wildlife.
- Do not collect animals or plants in buckets or use nets.
- Surveys and scientific monitoring may require a consent (consult with warden).

Sea angling

- **No fishing within the No Take Zone.**
- **Do not remove crawfish (spiny lobsters) from the reserve.**
- **Adhere to the MPA Zoning scheme and rules designated under D&SIFCA by-laws.**
- Catch and release all fish if not going to be used.
- Release all wrasse species, tope, red band fish, bull huss and conger eels where they are caught.
- Use barbless hooks.
- Avoid use of a gaff.
- Fish above the reef when fishing in reef areas. Do not fish on the bottom to avoid entanglement.
- Only retain sufficient fish for personal consumption and return all unwanted catch to the sea unharmed.
- Do not collect any bait from the intertidal area. You can obtain sustainable bait in the islands General store.
- Fishing of any type is not permitted within the area of a designated wreck site.
- Follow the National Federation of Sea Anglers (NFSA) 'Conservation Code for Sea Anglers' and abide by the 'Recommended Retention Size Limits'.
- Do not place any pots in the Landing Bay, they will be removed.
- Record and report all interesting catches to the Warden. For enquiries of further information contact the Warden on (01237) 431 831 or email warden@lundyisland.co.uk

If you happen to witness any infringements from this Code of Conduct and/or any instances of wildlife disturbance within the MPA, please contact the Warden on (01237) 431 831 or email warden@lundyisland.co.uk



DIVERS!

LUNDY'S MARINE LIFE NEEDS YOUR HELP!

Photo: Mike Deaton

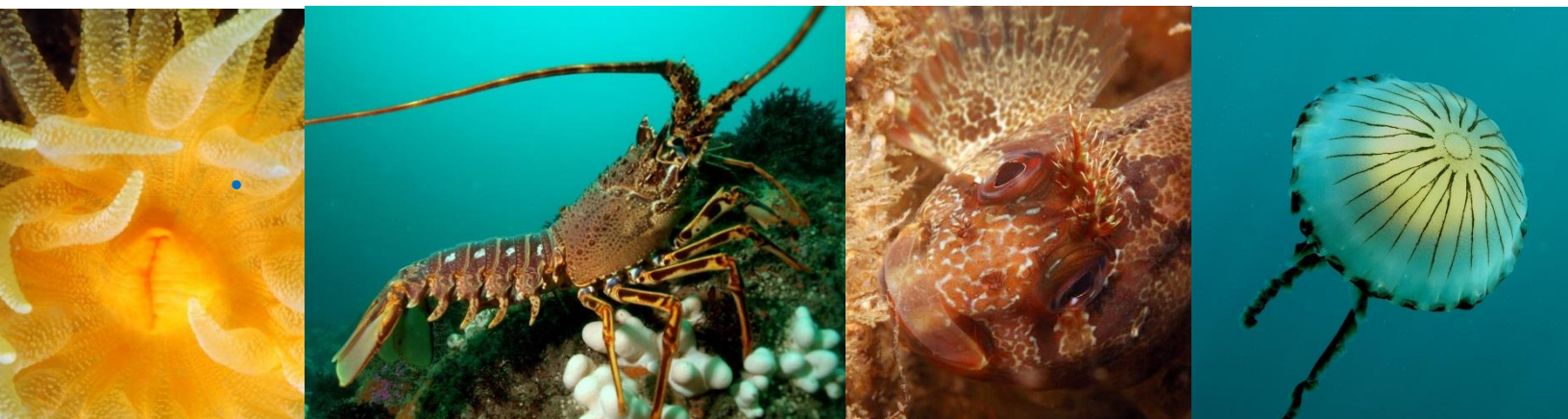
Your sightings could prove vital to helping conserve Lundy's Marine Protected Area

The waters around Lundy form a Special Area of Conservation (SAC) due to the importance of a number of its marine habitats and species. The SAC is covered within Lundy's Marine Protected Area (MPA) which also consists of Lundy's Marine Conservation Zone (MCZ). In order to continue conserving our astonishing and complex underwater communities **WE NEED YOUR HELP!** As you are the eyes and ears of the MPA, we want you to get involved in the conservation of the MPA via cataloguing and submitting your wildlife sightings and diving experiences.

Why not get involved by contributing your knowledge, experiences and photos of Lundy's marine life and habitats, as well as any other interesting things that you may come across! We are interested in everything from **non-native seaweeds and gelatinous jellyfish to colorful corals, crawfish, red band fish and silly seals!**

To help us, send in your photos and information - including **date, location and number of individuals** - to warden@lundyisland.co.uk or submit your sightings via the **Lundy Marine Sightings Facebook page**.

If you have any queries, please feel free to get in touch! And **THANK YOU!!!**



LUNDY SEALS

RESPECT, PROTECT, ENJOY

Lundy has a breeding colony of approximately 200 Atlantic grey seals. These beautiful animals enjoy interacting with divers, snorkelers and swimmers, and will often initiate play. Seals are naturally inquisitive, however, they are also cautious. By adopting a safe and respectful approach you will be able to enjoy longer and more exciting encounters.

If you have any questions please contact the Lundy Warden at warden@lundyisland.co.uk

Impact of disturbance on all seals

Seals haul out to moult, breed, rest and digest their food. All of this requires energy! Hauled out seals have already made a heavy investment, energy-wise, to get out of the sea. Flushing them back into the water increases the overall energy expenditure of these animals. Repeated disturbance is cumulative and can have compromising effects on a seal's energy budget over a short or long period of time. Additionally, during the pupping season heavily pregnant females carry their pups beneath them as they move over the rocks, so any disturbance that makes them rush carelessly to the sea can have fatal consequences for their pups and subsequently for themselves.

To ensure your encounter is enjoyable for both you and the seal, please adhere to the following points.

- If you observe any behaviors which might indicate stress, such as increased vocalisation, teeth bearing or rapid entry into the water please move away and allow the seal to recover.
- Keep boat speed below 5 knots within 100m of the shoreline.
- Whilst snorkeling or diving, please refrain from touching or feeding the seals.
- Do not take toys into the water to play with the seals
- Do not directly approach the seals on land or in the water or attempt to chase them, given time they will come to you.
- Take plenty of pictures and feel free to send these onto the warden, but avoid using flash photography as this may scare the seals.



Lundy's seals are protected through the island's Special Area of Conservation designation, the Conservation of Seals Act (1970) and the Wildlife and Countryside Act (1981). It is illegal to recklessly disturb or injure grey seals within the UK. Please have fun and enjoy your experience whilst remaining respectful.

Keep your speed below 5 knots within 100m of the shoreline



KEEP MOVING WITH A PREDICTABLE COURSE

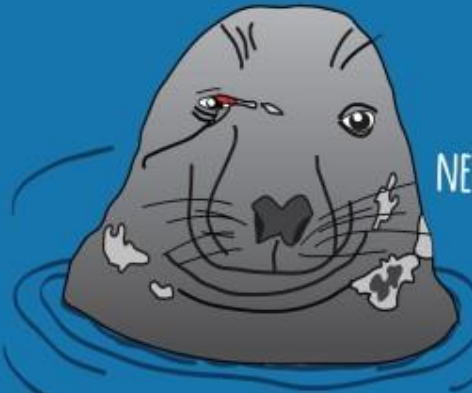


SLOW, NO WAKE, CRAFT-SIDE ON

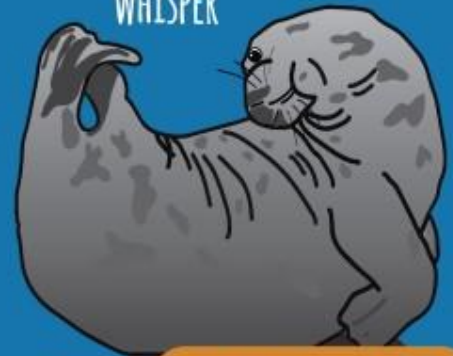
KEEP YOUR DISTANCE

IF SEALS LOOK AT YOU, YOU ARE TOO CLOSE

KEEP QUIET AND
WHISPER



NEVER FEED - IT INCREASES THE RISK OF
INJURY, SUCH AS A FISH
HOOK NEAR THE EYE



**PLEASE LEAVE CORNWALL'S GLOBALLY RARE SEALS AS AND WHERE
YOU FIND THEM FOR EVERYONE TO ENJOY!
MAKE ENCOUNTERS GREAT FOR SEALS AND GREAT FOR YOU!**

CONCERNED ABOUT A SEAL?
RING BDMLR: 01825 765546
SEEN A SEAL DISTURBED?
RING 0345 201 26 26

BEFORE
INTERACTION



AFTER
INTERACTION



THE IDEAL SEAL INTERACTION



PUT SEALS FIRST -
THEY NEED REST TOO

AVOID LARGE GROUPS
AND PUPS



KEEP YOUR DISTANCE



IF SEALS LOOK AT YOU,
YOU ARE TOO CLOSE



KEEP QUIET AND
WHISPER

STAY LOW AND
DOWNWIND



USE BINOCULARS FOR THE BEST VIEW
WITHOUT DISTURBING SEALS!



ENJOY THE NATURAL WILD BEHAVIOUR
OF THESE AMAZING CREATURES!

**PLEASE LEAVE CORNWALL'S GLOBALLY RARE SEALS AS AND WHERE
YOU FIND THEM FOR EVERYONE TO ENJOY!
MAKE ENCOUNTERS GREAT FOR SEALS AND GREAT FOR YOU!**

TELL US ABOUT THE SEALS YOU SEE!
SUE@CORNWALLSEALGROUP.CO.UK
WWW.CORNWALLSEALGROUP.CO.UK